

# KUEHNE+NAGEL RIVER SHIPPING

Specialists in  
Rhine-Main-Danube Traffic  
and Danube Sea Traffic

KUEHNE+NAGEL   
EUROSHIPPING



  
PantaRhei

YSTLOGISTICS 

## Contact:

Kühne + Nagel  
Euroshipping GmbH  
Linzer Straße 13  
D-93055 Regensburg

Tel. +49 (0)941 60805-0  
Fax. +49 (0)941 60805-66  
[knreg.euroshipping@kuehne-nagel.com](mailto:knreg.euroshipping@kuehne-nagel.com)



# Kühne + Nagel Euroshipping GmbH Regensburg - Centre of Competence of KUEHNE+NAGEL River Shipping



In 1996 Kuehne+Nagel established their centre of competence for inland navigation at Regensburg.

A professional team with more than 25 years of experience in European waterway navigation succeeded in becoming the leading inland navigation operator for the Rhine-Main-Danube traffic.

Being owned by Kuehne+Nagel Beteiligungs AG Sarl Luxemburg (51%) and the Austrian Logistik Service GmbH Linz (49%), the activities of Kühne + Nagel Euroshipping GmbH mainly concentrate on traffic between the ports of Antwerp, Rotterdam and Amsterdam to the Black Sea and vice-versa.

Our position as an integral part of the Kuehne+Nagel Group ensures our presence at various sites between Rotterdam and Constanza.



Our storage areas in the port of  
Regensburg

# Kühne + Nagel Euroshipping GmbH Regensburg - Centre of Competence of KUEHNE+NAGEL River Shipping



International inland navigation requires comprehensive and efficient service.

We manage to meet our customers' requirements by operating a fleet of about 50 ships with a loading capacity of approx. 65,000 tons, and by having access to an optimal network along the Rhine-Main-Danube axis.

In addition, we are in the position to offer transports that require special know-how of our employees and various certifications of the ships loaded.

Our experienced ship crews, who have both Rhine and Danube patents, further contribute to the high quality of transport.



# Kühne + Nagel Euroshipping GmbH Regensburg - Centre of Competence of KUEHNE+NAGEL River Shipping



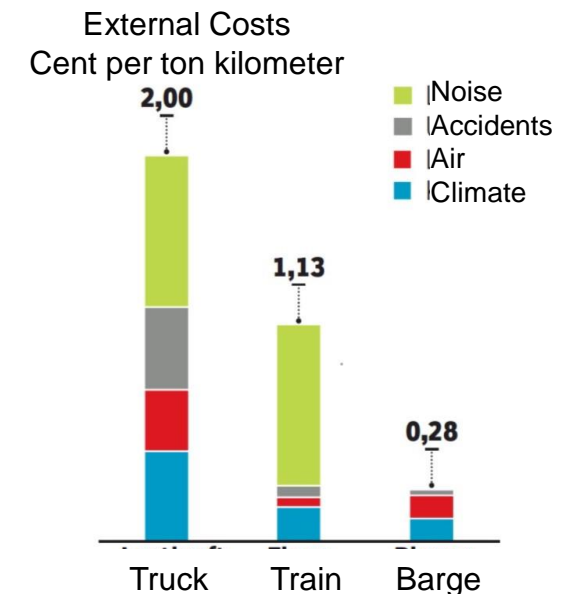
Our specialists in European Waterway Navigation within the Kuehne+Nagel Network provide transport solutions involving barges, and offer comprehensive Supply Chain Management.

**Our know-how guarantees your optimal advice and support.**

In terms of sustainability, inland shipping was and is unbeatable. Waterway transports contribute to a significant reduction in CO<sup>2</sup> emissions and external costs.



Our storage halls in the port of Regensburg



SWP GRAFIK QUELLE: MINISTERIUM FÜR VERKEHR  
BADEN-WÜRTTEMBERG

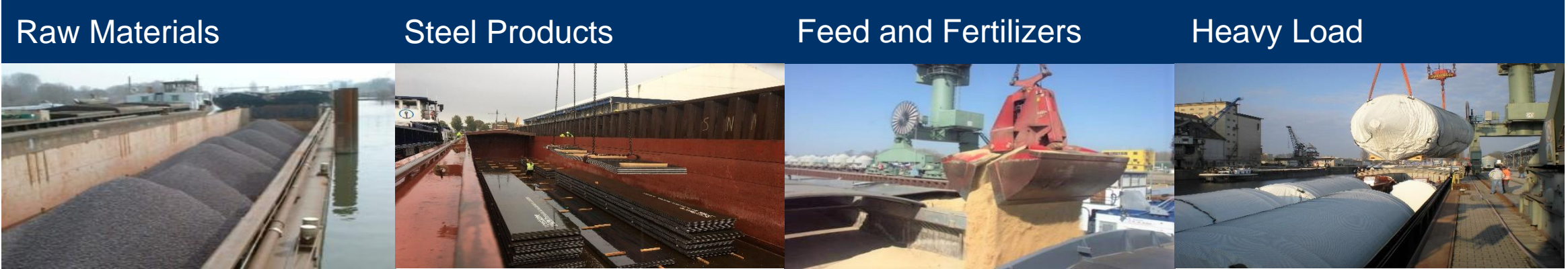
# KUEHNE+NAGEL River Shipping

..... our services at a glance

European River Transports of dry cargo, such as raw / bulk materials, steel products, feed, fertilizers, heavy load, gravel and construction material, containers, slag, wood, recycling products, tarred road construction waste, pulp, paper with own barges and as an operator of chartered ships

Tailormade trimodal logistic services including transshipment, temporary storage (uncovered and covered), as well as pre- and on-carriage by truck or rail

# Transports of our Fleet



# European Locations of KUEHNE+NAGEL River Shipping

## Hendrik Ido-Ambacht (NL)

YST Logistics B.V.

## Regensburg (D)

Kühne + Nagel Euroshipping GmbH

DTU Donau- Transport- und Umschlagsgesellschaft mbH

## Linz (A)

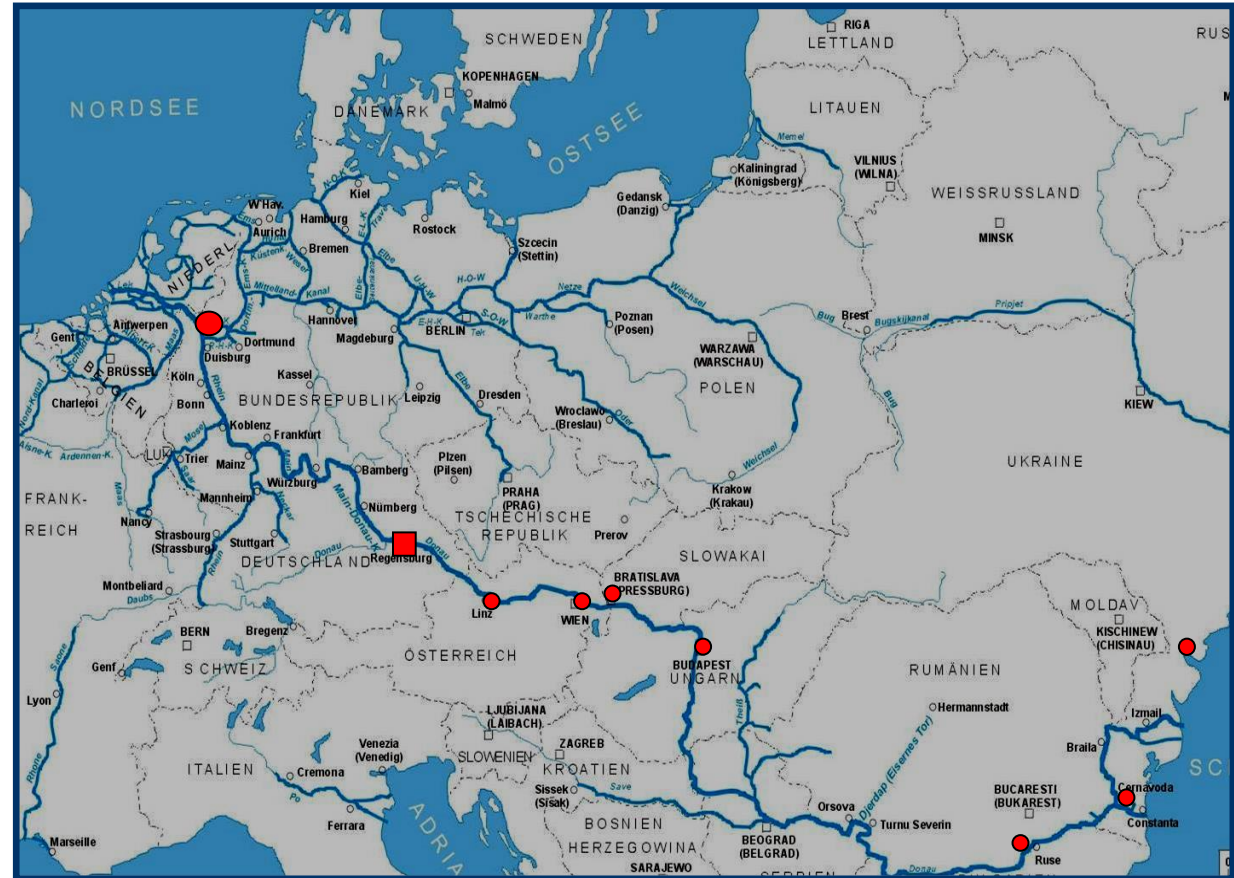
Logistik Service GmbH

## Brunn am Gebirge / Wien (A)

Panta Rhei Befrachtungs- und Speditions GmbH  
PR Shipping GmbH

**Budapest (HU)** Kühne + Nagel Euroshipping Agency

**Ruse (BG)** Kühne + Nagel Euroshipping Agency



## Constanta (RO)

PR Shipping srl.

## Illychevsk (UA)

Panta Rhei Ukraine Ltd.



# KUEHNE+NAGEL River Shipping Organization

## Jan-Hendrik Köstergarten

Regional Sea Logistics Manager

Tel. +49 (0)40 30333 1400

jan.hendrik.koestergarten@kuehne-nagel.com

## Matthias Knicky

National Sea Logistics Manager

Tel. +49 (0)421 3605 1300

matthias.knicky@kuehne-nagel.com

## Alexander Ochs

Responsible for River Shipping in Europe

Tel. +49 (0)941 60 80 590

alexander.ochs@kuehne-nagel.com

KUEHNE+NAGEL  
EUROSHIPPING 



PantaRhei 



Kühne + Nagel Euroshipping GmbH, Linzer Straße 13  
D-93055 Regensburg

Alexander Ochs, Tel. +49 (0)941 60 80 590  
alexander.ochs@kuehne-nagel.com

DTU Donau- Transport- und Umschlagsgesellschaft mbH  
Linzer Straße 13, D-93055 Regensburg

Alexander Ochs, Tel. +49 (0)941 60 80 590  
alexander.ochs@kuehne-nagel.com

Panta Rhei Befrachtungs- und Speditions GmbH  
Europaring A04 401, A-2345 Brunn/Gebirge  
Peter Dobias, Tel. +43 (0)2236 379 777 130 dobias@p-r.at

YST Logistics B.V., Noordeinde 109  
NL-3341 LW Hendrik Ido Ambacht

Philip van Ijzerlooij, Tel. +31 (0)78 68 11 540  
philip@ystlogistics.nl

# KUEHNE+NAGEL River Shipping – Organization and Ownership Structure



Rhine-Main-Danube Traffics



Danube traffics up to the Black Sea and Danube Sea Traffics from and to Black Sea Ports, worldwide ship chartering



Trimodal transshipment terminal situated at the most important interface of the Rhine-Main-Danube traffice at Regensburg with uncovered storage areas and storage hall



Specialized traffics on European inland waterways starting from the North Sea Ports

# Certified Quality at Kühne + Nagel Euroshipping GmbH



Completely integrated into the Kuehne+Nagel Quality Management, we meet the high requirements of our customers with regard to quality, safety, health and environmental management (QSHE)



**Quality (ISO 9001):** Quality management today requires tracking and monitoring of processes – possible sources of errors are identified, eliminated and documented in advance. Our top priority is to satisfy our customers. Outstanding quality ratings and feedback from our customers show, that we are on the right track.

**Environment (ISO 14001):** For Kühne + Nagel Euroshipping, quality also means conserving resources, being environmentally conscious and communicating these ideals. Every ton that goes on a journey with our inland barges instead of being delivered by truck, contributes to CO<sup>2</sup> reduction. Goods that require monitoring are being stored on our special area, approved in accordance with the Federal Immission Control Act.

**Occupational Safety (ISO 45001):** Occupational safety and health management are of increasing importance. Monitoring and certification by Kuehne+Nagel guarantees that requirements are met at the highest level also in this field.

**GMP-Certification:** Our company meets the strict guidelines of GMP standards for the transport, handling and storage of feed. We can thus guarantee our customers, that their products are in the best hands with us, when it comes to product purity and food safety.



# Your contacts at Kühne + Nagel Euroshipping GmbH

## Management

## Disposition / Sales



Alexander Ochs  
Managing Director  
Phone: +49 941 60805-90  
Mobile +49 151 52 37 44 28  
alexander.ochs@kuehne-nagel.com

Markus Sailer  
Managing Director  
Logistik Service GmbH, Linz  
Phone : +43-732-6598-3401  
markus.sailer@logserv.at

Heinz Sopper  
Deputy Managing Director  
Phone: +49 941 60805-20  
Mobile +49 172 44 04 501  
heinz.sopper@kuehne-nagel.com

Patrick Lukaszik  
Authorized Representative  
Phone: +49 941 60805-50  
Mobile +49 172 42 43 883  
patrick.lukaszik@kuehne-nagel.com

# Our own fleet

## MS „Westenwind“



Dimensions	Loading Capacity
------------	------------------

104,95 x 10 m

2.301 tons

## MS „Ostwind“



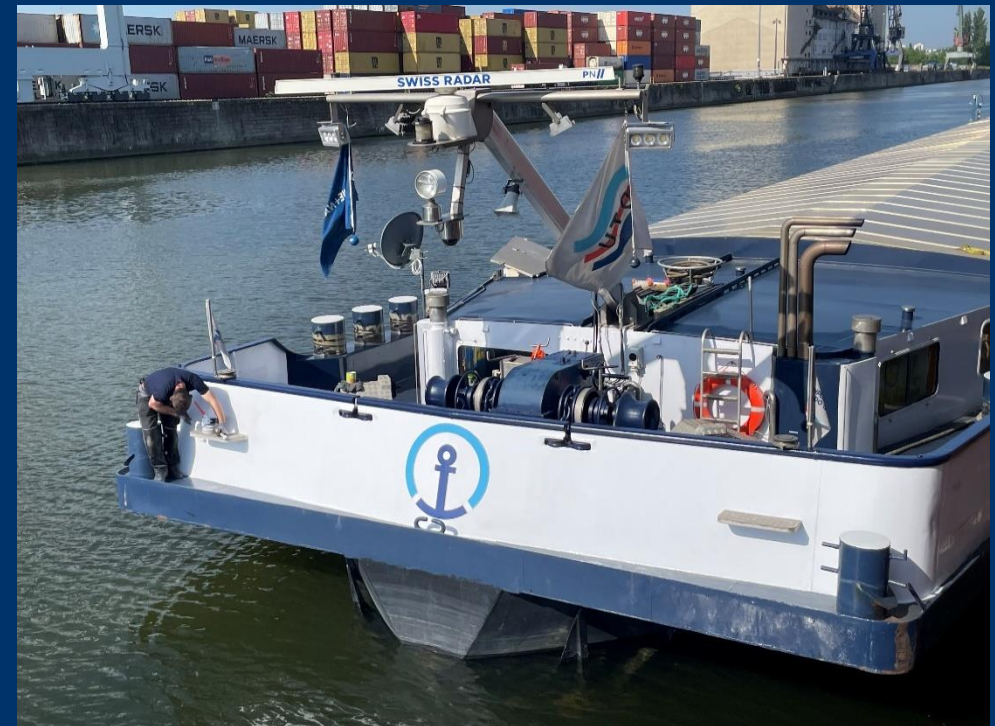
Dimensions	Loading Capacity
------------	------------------

85,83 x 9,5 m

1.632 tons

# Our own fleet

## MS „Südwind“



Dimensions

84,16 x 9,53 m

Loading Capacity

1.596 tons

# Exclusively Chartered Fleet

## GMS „Ulm“



Dimensions  
105 x 9,00 m

Loading Capacity  
1.827 to

## GMS „Europa“



Dimensions  
104,82 x 9,50 m

Loading Capacity  
1.957 to

# Exclusively Chartered Fleet

## MS „Schauenburg“



Dimensions

110 x 9,51 m

Loading Capacity

2.087 tons



# Ships under Contract in our Fleet

## Coupled Unit „Modena“ + „Modena II“



### MS „Modena“

Dimensions	Loading Capacity
110 x 11,45 m	3.094 tons

### SL „Modena II“

Dimensions	Loading Capacity
87,47 x 11,0 m	2.074 tons

### KV „Modena“ + „Modena II“

Dimensions	Loading Capacity
197,47 x 11,45 m	5.168 tons

# Ships under Contract in our Fleet

Coupled Unit „Modena“ + „Modena I“

Dimensions

197,47 x 11,45 m

Loading Capacity

5.168 tons



Inspire. Empower. Deliver.

**KUEHNE+NAGEL**

